



Composite Log

19/23-8

Well Data

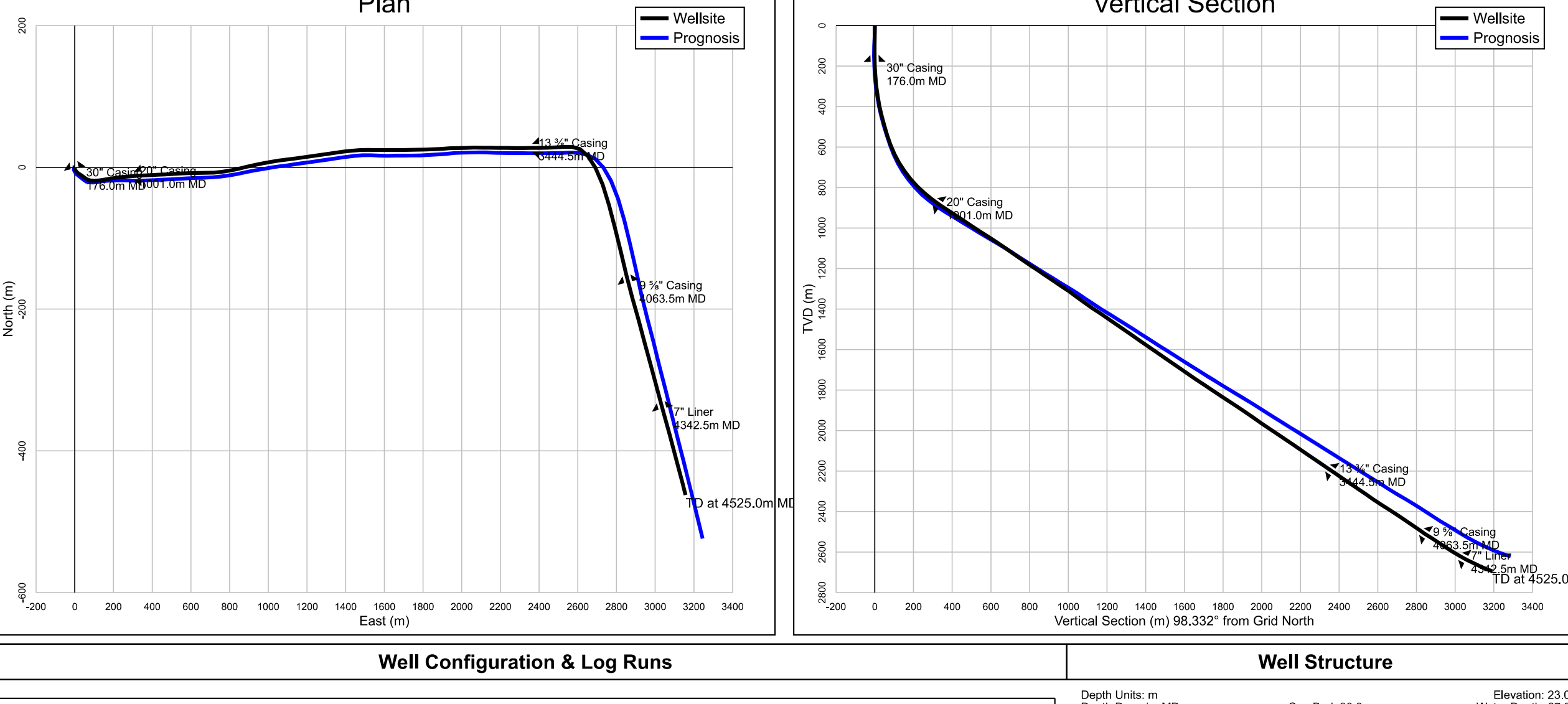
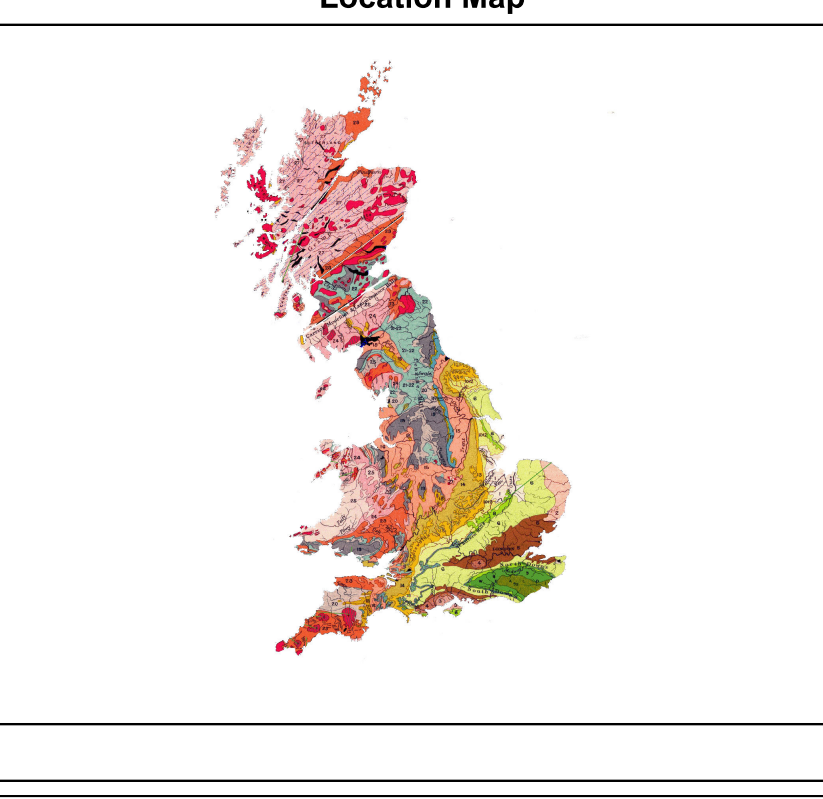
Well Name: 19/23-8
 Country: UK
 Field: Silverburn
 Status: Plugged and Abandoned
 Rig Name: Sea Explorer
 Latitude: 57° 11' 9.8196" N
 Longitude: 2° 5' 42.7272" W
 UTM E: 445311
 UTM N: 6338461
 Depth Datum: RT
 Elevation (m): 23
 Water Depth (m): 67
 Total Depth (m MD): 4525
 Total Depth (m TVDMSL): 2671.9

Partners, Contractors, Geologists

Partners (%):
 HRH Geology 100

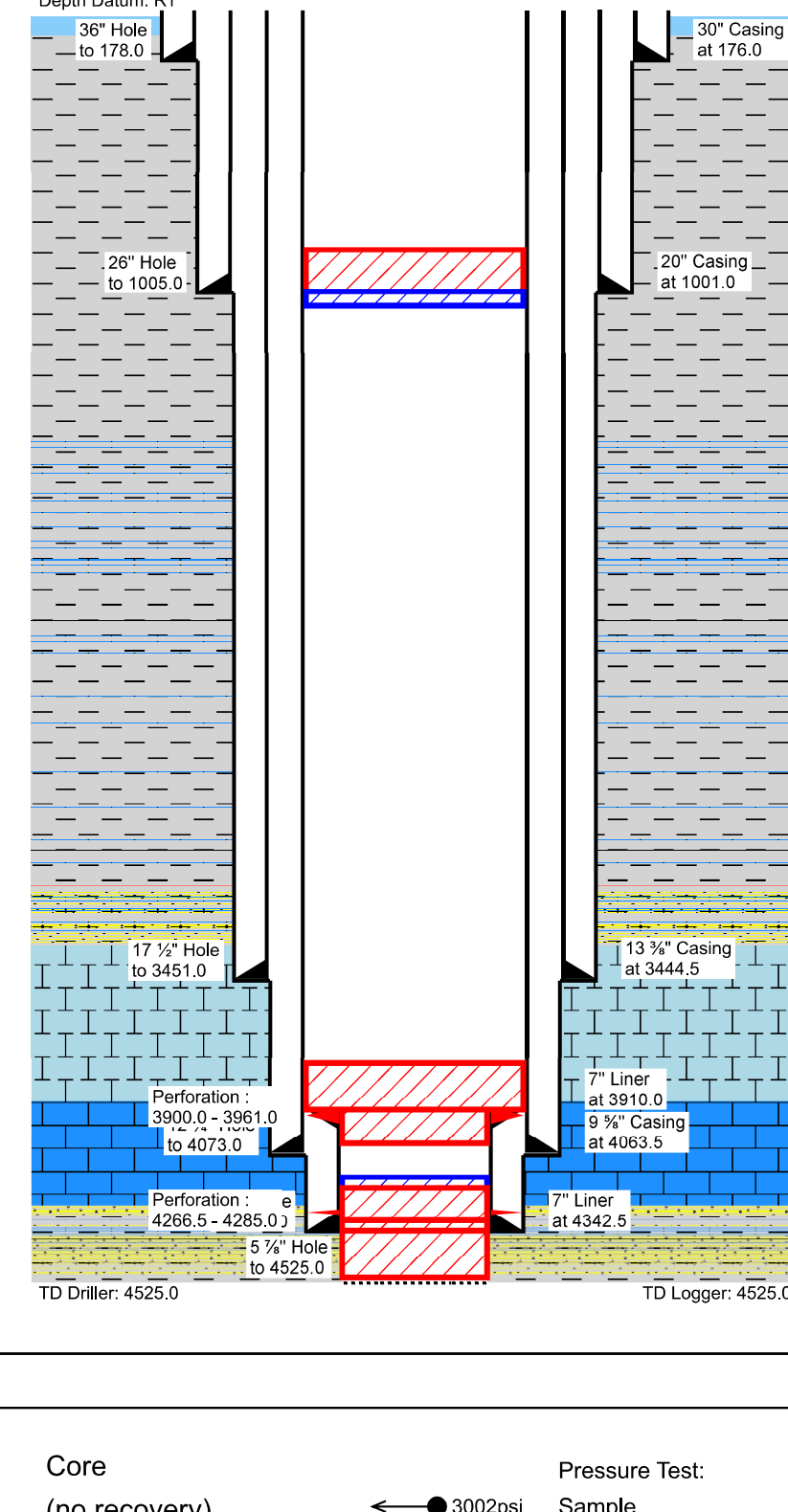
Contractors:
 Drilling: HRH Geology
 Mud Logging: Sample Logging Plc
 MWD: DrillLog Plc
 Cementing: Casing Bond Ltd
 Casing: Hole Case Ltd
 Wireline: WireLog Plc

Geologists:
 J.Hutton: 80 - 3100
 W.Smith: 80 - 3250
 A. Mohorovicic: 3100 - 4550
 C.Lyell: 3250 - 4550



Well Configuration & Log Runs

Hole Size (in)	Hole MD (m)	Type	Casing Size (in)	Shoe MD (m)	Hanger MD (m)	Comments
36	178.0	Casing	30	176.0		
26	1005.0	Casing	20	1001.0		
17.5	3451.0	Casing	13.375	3444.5		
12.25	4073.0	Casing	9.625	4063.5		
8.5	4345.0	Liner	7	4342.5	3910.0	
5.875	4525.0	None				



LWD/MWD Logging Summary

Run	Bit Size (in)	Suite	Date Interval	MD Interval (m)	Comments
1	26	GR-CAL-SONIC	12 Feb 2021 - 15 Feb 2021	178.0 - 1005.0	Performed as per specification
2	17.5	GR-CAL-SONIC-NEUT-DENS	18 Feb 2021 - 03 Mar 2021	1005.0 - 3451.0	Performed as per specification
3	12.25	GR-CAL-SONIC-NEUT-DENS	11 Mar 2021 - 23 Mar 2021	3451.0 - 4073.0	Performed as per specification
4	8.5	GR-CAL-SONIC-NEUT-DENS	31 Mar 2021 - 07 Apr 2021	4073.0 - 4345.0	Performed as per specification
5	6	GR-CAL-SONIC-NEUT-DENS	15 Apr 2021 - 20 Apr 2021	4345.0 - 4525.0	Performed as per specification

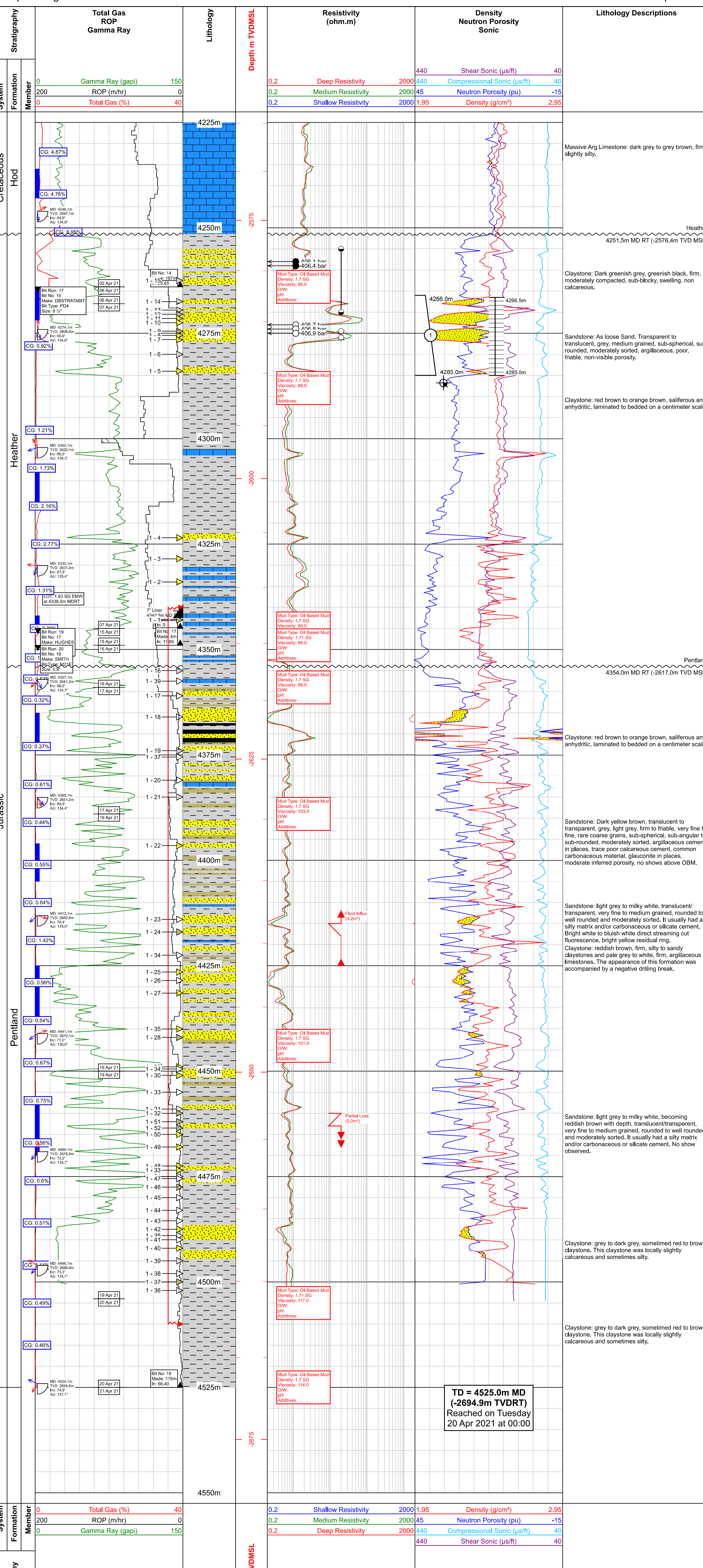
Wireline Logging Summary

Run	Suite	Date Interval	MD Interval (m)	Comments
1a	GR-CAL-SONIC	12 Feb 2021 - 13 Feb 2021	4065.0 - 4550.0	Calibrated at rotary.
1b	SON-SON-SON	12 Feb 2021 - 13 Feb 2021	110.0 - 4550.0	Vertical Seismic Profile to surface
2a	SWC-GR-RES-CAL-NEU-POR	15 Feb 2021 - 16 Feb 2021	4250.0 - 4500.0	7 Side wall cores taken
3a	MDT-GR-RES-CAL-SONIC	16 Feb 2021 - 17 Feb 2021	4065.0 - 4550.0	7 test stations: 3 good test, 4 failed/light
3b	MDT-GR-RES-CAL-SONIC	17 Feb 2021 - 18 Feb 2021	4065.0 - 4550.0	7 test stations: 3 good test, 4 failed/light
3a	Perforation assembly	18 Feb 2021 - 20 Feb 2021	4065.0 - 4550.0	Perforated Interval 4593m - 4640m MD

Key

Sandstone	Chalk	Anhydrite	Sandy	Pelagic Foraminifera	Core (no recovery)	Pressure Test: Sample
Siltstone	Limestone	Halite	Silty	Micro Fossils	SWC, recovery (lithology)	No Sample
Brown Claystone	Argillaceous Limestone	Polyhalite	Argillaceous	Macro Fossils	SWC, no recovery	Tight
Grey Claystone	Dolomitic Limestone	KMg Salts	Conglomeratic	Tabulata	Liner Hanger	Surveys
Calcareous Claystone	Calcareous Dolomite	Coal	Calcareous	Plant Remains	Casing/Liner Shoe	Loss/Gain
Shale	Dolomite		Chalky	Carbonaceous	SHOVS	Fracturing Interval
Tuff	Chert		Glaucconitic	Bituminous	SHOWS	Dip - True
Intrusive			Mic	Oolitic	Oil	Dip - Apparent
Extrusive			Pyritic	Anhydritic	Oil & Gas	
					Oil & Gas	
					Oil & Gas	
					Oil & Gas	
					Oil, Gas & Condensate	
					Oil, Gas & Condensate	
					Continuous	
					Discontinuous	

Depth Range: 4225-4550m MDRT Scale: 1:500 Date: 27 Apr 2022



Well Results

Run Number	Test Number	Depth (m)	Hydrostatic Pressure	Pressure (bar)	EMW (SG)	Mobility	Sample	Formation	Comments	
1	1	3135.0	2012.7	507.5	507.2	219.5	1.1	No	Forties Sst	60 cc/min, good perm
1	2	3135.6	2013.0	510.2	510.2	219.6	1.1	No	Forties Sst	20 cc/min, good perm
1	3	3136.2	2013.5	516.1	516.1	219.6	1.1	Yes	Forties Sst	20 cc/min
1	4	3136.2	2014.4	525.7	525.7	219.7	1.1	No	Forties Sst	20 cc/min
1	5	3293.0	2098.2	516.6	516.5	175.7	0.8	No	Lista	Tight, pressure climbing
1	6	3313.0	2109.1	519.7	519.5	177.9	0.9	No	Lista	Tight, pressure climbing
1	7	3402.0	2160.6	535.2	535.6	258.7	1.2	No	Ekofisk	Tight
1	8	3418.0	2162.8	535.4	535.1	258.6	1.2	No	Ekofisk	Tight
3	1	3419.4	2166.8	509.9		260.0	1.2	No	Tor	
3	2	3419.4	2166.8	509.9		259.6	1.2	Yes	Tor	Sample attempted, 2-3/4 gal chamber opened & sealed.
3	3	3448.3	2182.3	513.1		260.8	1.2	No	Tor	
3	4	3469.6	2193.8	515.0		261.7	1.2	No	Tor	
3	5	3469.6	2193.8	515.2		262.9	1.2	Yes	Tor	Sample attempted, 2-3/4 gal chamber opened & sealed.
3	6	3469.6	2193.8	514.1		264.2	1.2	No	Tor	
3	7	3486.4	2202.8	516.8		264.9	1.2	No	Tor	
3	8	3515.3	2218.6	519.0		265.3	1.2	No	Tor	
3	9	3515.3	2218.6	517.5		264.4	1.2	No	Tor	Sample attempted
3	10	3532.0	2227.7	520.3		264.7	1.2	No	Tor	Sample attempted
3	11	3535.5	2228.5	520.8		264.9	1.2	No	Tor	Sample attempted
3	12	3538.1	2231.0	522.7		265.7	1.2	No	Tor	
3	13	3538.4	2240.0	523.0		266.0	1.2	No	Tor	Sample attempted
3	14	3554.8	2240.0	522.8		265.8	1.2	No	Tor	Sample attempted
3	15	3567.0	2246.6	523.6		266.6	1.2	No	Tor	
3	16	3568.5	2247.4	524.1		267.0	1.2	No	Tor	Sample attempted
3	17	3579.2	2253.1	525.0		266.6	1.2	No	Tor	
3	18	3614.2	2271.9	527.3		269.9	1.2	No	Tor	Sample attempted
3	19	3641.6	2286.8	534.7		268.9	1.2	No	Tor	
3	20	3678.0	2306.7	538.8		170.0	0.7	No	Tor	Tight, pressure climbing
3	21	3846.8	2393.5	559.2		285.1	1.2	No	Tor	
3	22	3866.6	2403.1	559.2		285.2	1.2	No	Tor	
2	1	4259.0	2579.1	884.3	884.3	406.1	1.6	Yes	Heather	Good test - gas
2	2	4259.0	2579.5	884.6	885.1	406.4	1.6	Yes	Heather	Good test - gas
2	3	4273.0	2585.3	884.4	886.5	406.7	1.6	No	Heather	Good test
2	4	4274.0	2585.7	884.4	887.9	406.8	1.6	No	Heather	Good test
2	5	4275.0	2586.1	884.4	887.4	406.9	1.6	No	Heather	Good test

Production Tests

Date	Test Number	Top MD (m)	Base MD (m)	Top TVDMSL (m)	Base TVDMSL (m)	Production	Formation	Comments
	1	4266.0	4285.0	2582.4	2590.2	Condensate	Humber	
	2	3900.0	3961.0	2418.9	2446.8	Condensate	Tor	

Perforations

Date	Number	Top MD (m)	Base MD (m)	Top TVDMSL (m)	Base TVDMSL (m)	Comments
27 Apr 2021	1	3900.0	3961.0	2418.9	2446.8	
27 Apr 2021	2	4266.5	4285.0	2582.6	2590.2	

Fracturing

Date	Type	Top MD (m)	Base MD (m)	Top TVDMSL (m)	Base TVDMSL (m)	Comments
11 Mar 2021	Acid	4340.0	4510.0	2611.8	2667.8	120 bbis pumped